

043462

LARAMIE COUNTY
COUNTY CLERK

CERTIFIED LAND CORNER RECORDATION

'88 MAY 5 PM 1 28

DESCRIPTION OF CORNER EVIDENCE FOUND, AND ORIGINAL RECORD (if known)
Found no evidence of previous monumentation.

1/4 S.32
S.5
T.14N.
R.64W.
T.13N
6th P.M.

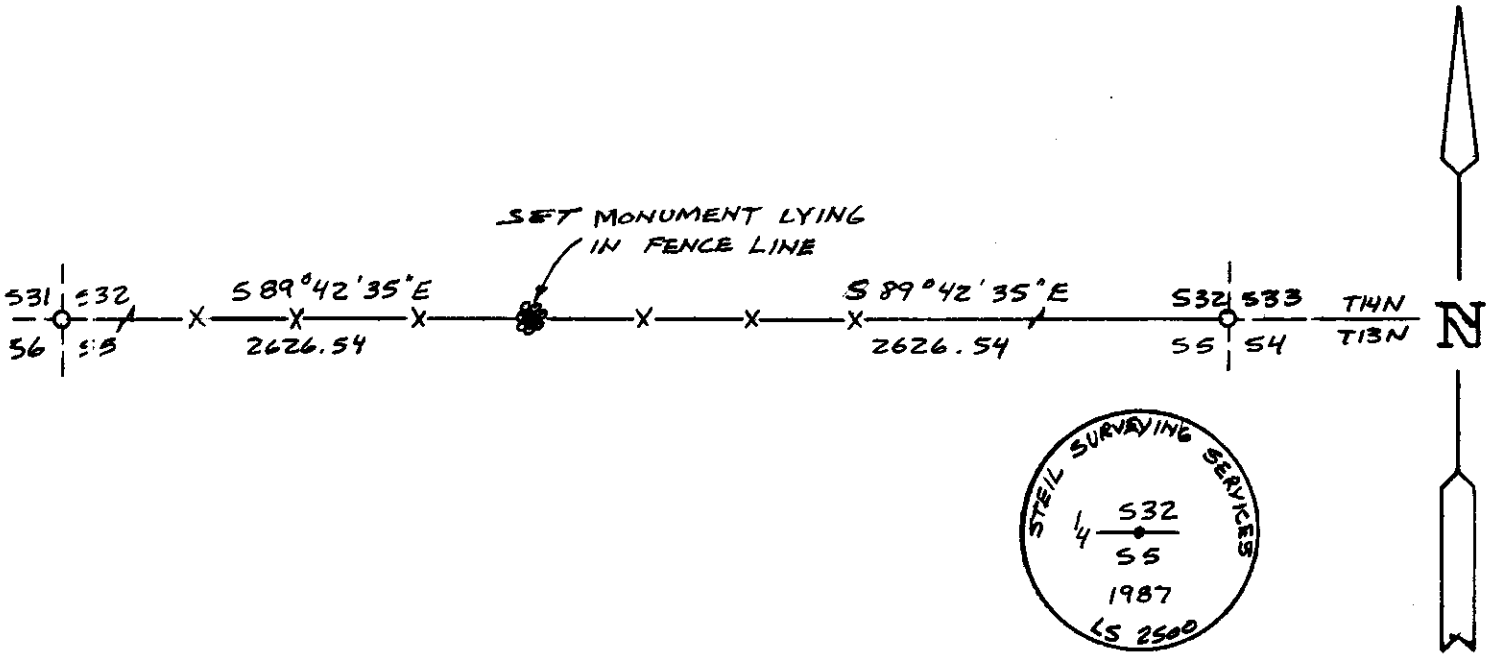
G.L.O. Record - Limestone 15" x 8" x 5" - John B. Thomas, Deputy Surveyor,
17 October, 1870.

DESCRIPTION OF MONUMENT AND ACCESSORIES ESTABLISHED
TO PERPETUATE THE ORIGINAL LOCATION OF THIS CORNER:

At the corner: Set 2 1/2" x 30" aluminum pipe with 3" aluminum cap projecting 4" above ground
with collar of stone stamped as shown below. Set at midpoint between
NW and NE corners of Section.

Accessories : See ties below.

SKETCH, WITH COURSE AND DISTANCE TO ADJACENT CORNER IF DETERMINED IN THIS SURVEY.
(May Sketch or Paste Reproduction on Reverse Side.)



I, John A. Steil certify that I have carefully performed or reviewed the work
done on the diagrammed corner as reported on this recordation form and approve the same.

John A. Steil
Signature of Surveyor

L.S. 2500
Registration No.

STATE OF WYOMING,
Office of Clerk and Recorder,
County of Laramie

This "corner record" was filed for record on the 5th day of May, 1988, was noted
on the cross-index plat and is assigned page No. 1978, in book No. 1259.

Janet C. Whitehead
County Official

Cross Index No.	A-7	T. 13N	R. 64W	Mer. 6th
	Z-7	T. 14N	R. 64W	Mer. 6th
		T.	R.	Mer.
		T.	R.	Mer.
		T.	R.	Mer.
		T.	R.	Mer.
		T.	R.	Mer.